

Harvesting | Transport | Cultivation | Automotive | Classic Cars

**ZIEGLER** |

**Welcome**

**ZIEGLER**  
**introduces itself**

## ZIEGLER – successful for three generations

It all started more than 100 years ago as a small electrical trade in the Bavarian town of Pöttmes. Today's retail industry has become a modern global player - with three international locations, more than 600 employees and distribution partners on each continent.

Today, ZIEGLER is the world leader in canola harvesting technology, offering customers a wide range of transport solutions for agricultural harvest headers in over 300 model variants. In addition, ZIEGLER is an OEM supplier as well as a contract manufacturer for internationally known companies.

Under the brand "Classic Cars" Ziegler offers classic Mercedes R107 and special conversion kits for US import cars of this type.



The Ziegler family (company owners)

## Company history

1923 – Founding of the company as an electrical trade in Pöttmes

1960 – Entry into agricultural technology through production of fodder dampers

1966 – Construction of the first production hall in Pöttmes

1981 – Acquisition of Mauser and Frankenstolz

1986 – Acquisition of the production rights of Diadem

1992 – ZIEGLER starts as an automotive supplier in the Czech Republic

1995 – Takeover of the company Mörtl, Gemünden am Main

1996 – Foundation of the Zieglera Masinbuve in Daugavpils / Latvia

2008 – Takeover of Walter Keller AG, Switzerland

2018 – ZIEGLER starts its own brand "Ziegler Classic Cars"

## ZIEGLER at a glance

- Head office and headquarters: Pöttmes, Germany
- Production plants: Nýřany (CZ), Daugavpils (LV)
- Company premises of all locations total: approx. 300,000 square meters
- Total number of employees: 600 / distribution partners worldwide: approx. 30
- Fields of activity: mechanical engineering, automotive technology, vehicle construction
- Reference customers mechanical engineering: Cargotec, Kuhn, Kässbohrer etc.
- References Automotive: Delphi, Morgan Ceramtec, Moog etc.
- All companies and real estate are 100% owned by Martin Ziegler (no foreign investments).

## ZIEGLER has „ISO 9001“ and „ISO 3834“ certification



## ZIEGLER production sites and international sales partners (Google Maps)



# Company headquarters and production sites



## Pöttmes (headquarters)

- Administration
- Purchase
- Distribution
- Marketing
- Quality management
- Engineering
- Customer service
- Spare parts
- Logistics, shipping, customs
- Training center
- Showroom



## Nyrany (CZ)

Production of electromechanical components/assemblies for the automotive and electrical industry. LM tech and mounting/logistics for header trailers

- 8.000 m<sup>2</sup> production area
- Modern machinery
- 200 employees
- 3-shift operation



## Nyrany (CZ) impressions



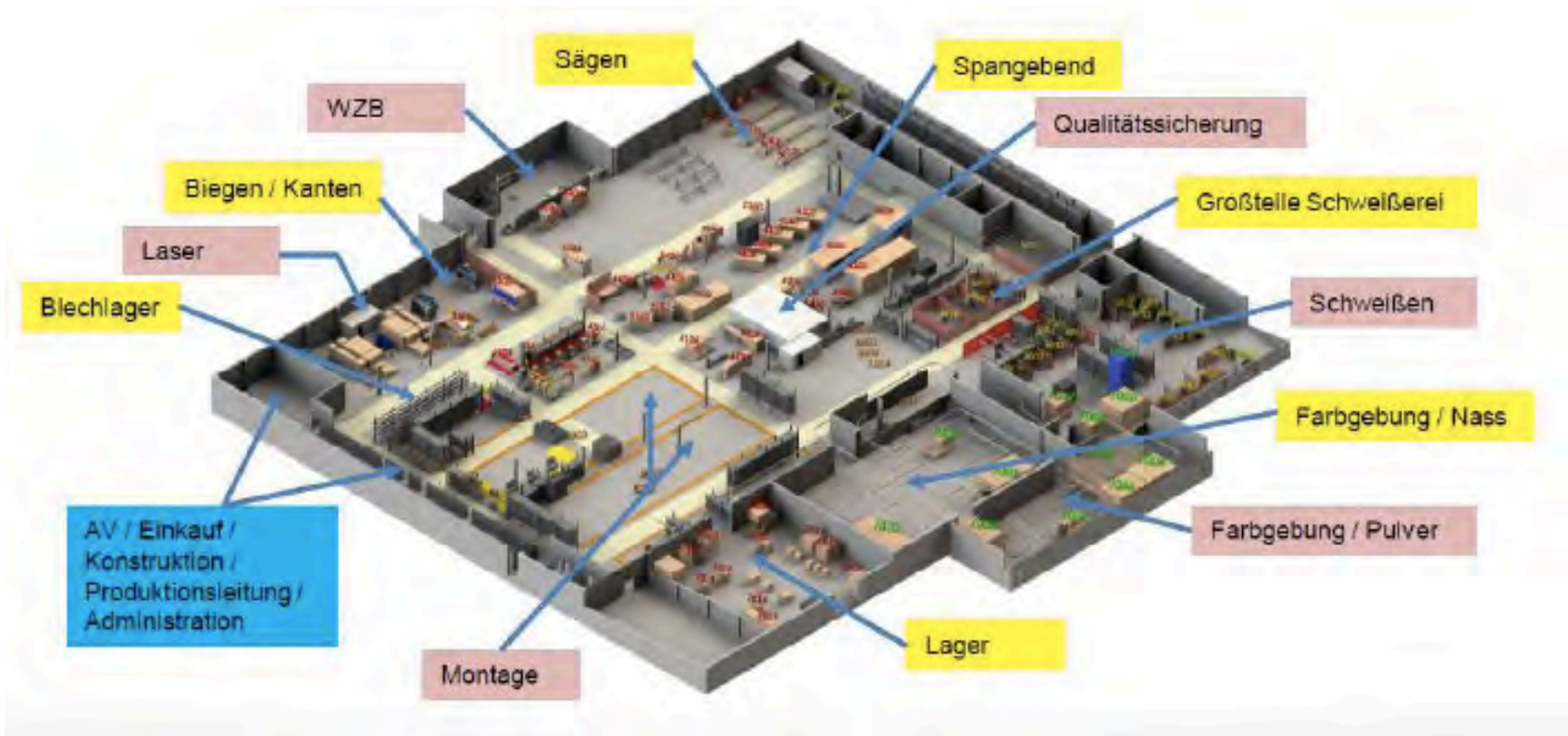
## Daugavpils (LV)

Assembly of components for harvesting technology. Production of "welded assemblies" for contract manufacturing and production of automotive components.

- 20,000 m<sup>2</sup> production area
- Modern machinery
- 320 employees
- 3-shift operation



## Daugavpils (LV) plant overview (german)



## Daugavpils (LV) extract of machinery

### CNC /BENDING/LASER

- 1 trump Truma Bend V200
- 2 CNC press brakes Adira
- 4 other press brakes
- 2 Trumpf laser cutting machines

### MACHINING

- Hedelius Magnum BAZ, BC100-4500 and BC100-2500
- CNC Emco Maxx Turn 95
- CNC Emcoturn E65 und E45
- CNC milling machine Hedelius BC 100 and Magnum 2500/4500
- CNC milling machine Hermle U 1130
- CNC CHIRON mill FX800

### MECHANICAL AND WIRING HARNESS ASSEMBLY

### WELDING

- Welding places / 3 shift operation
- All all welders are certified according to DVS EN 387
- 7 „Demmeler“ welding tables
- Welding machine for large "a" dimensions
- Stainless steel welding
- Linear welding line – 5 meters welding seams

### PAINT SHOP

- Sashing iron - phosphating
- KTL primer RAL 9005 (external) (LxWxH 2.8 x 0.7 x 1.4 meters)
- Powder painting – up to 6000 x 2100 x 2200 mm
- Wet painting – 8000 x 2900 x 2000 mm
- Galvanizing (external)

## Daugavpils (LV) Impressions/factory

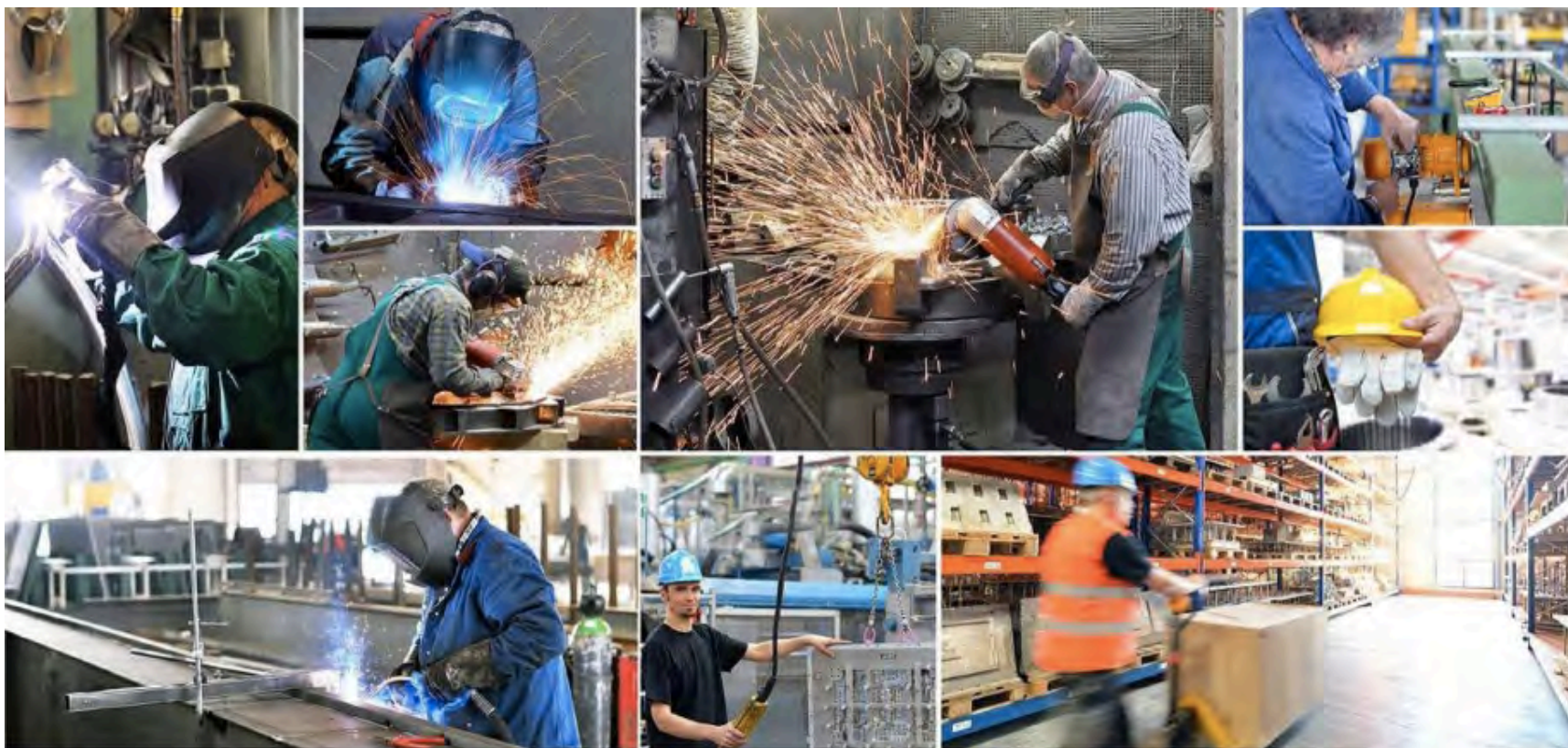


## Daugavpils (LV) Impressions/factory

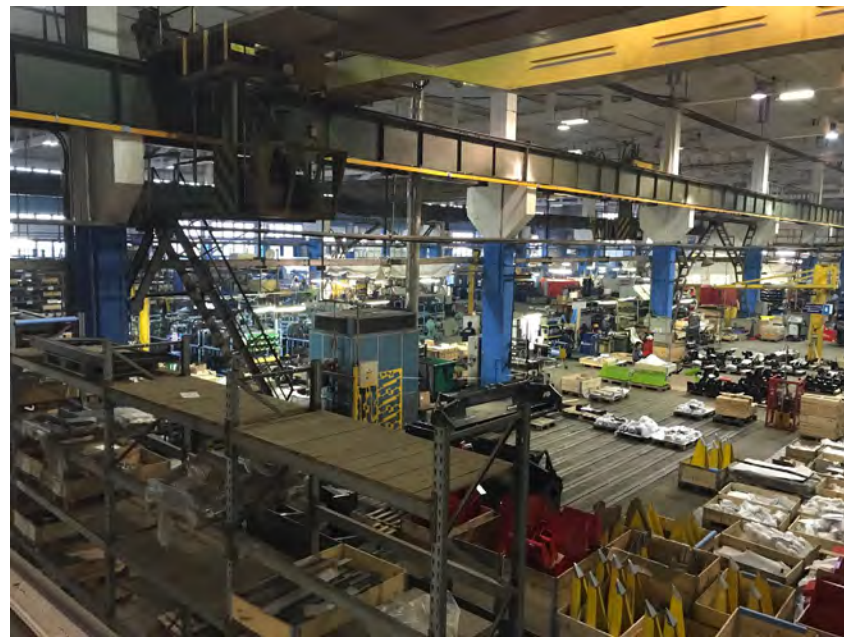
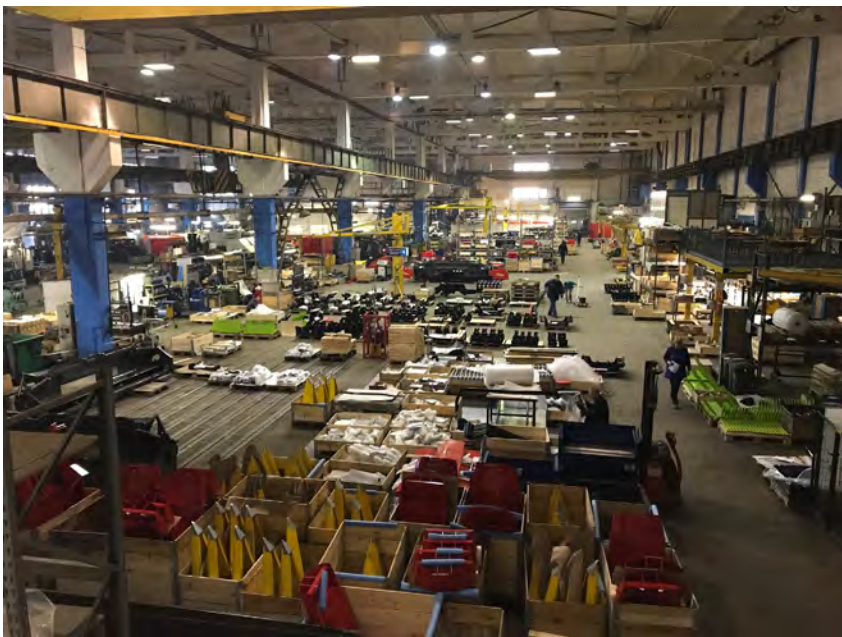




## Daugavpils (LV) Impressions / mechanical engineering



## Daugavpils (LV) Impressions



## Daugavpils (LV) Impressions / automotive



# Fields of activity and company brands

## ZIEGLER GMBH

Management and controlling of all business fields / brands

### ZIEGLER HARVESTING

Harvest technologies

### ZIEGLER TRANSPORT

Header trailers

### ZIEGLER CULTIVATION

Soil cultivation and liquid manure

### ZIEGLER AUTOMOTIVE

Automotive and electr. components

### ZIEGLER CLASSIC CARS

Spare parts and Car sales

ZIEGLER GMBH - Contract manufacturing (mechanical engineering and automotive)

Martin Ziegler GmbH & Co KG – Rental property of own industrial estate

## ZIEGLER leads three markets

We have distributed our business areas to our three production sites in such a way that exactly the necessary know-how and personnel are bundled to match the respective products. So our customers receive very high levels of work process and product quality.

**With this strategy we have become the market leader in rapeseed harvesting technology and in header trailers. Further on we are one of the largest contract manufacturers worldwide for park distance control sensors (60 million sensors per year).**

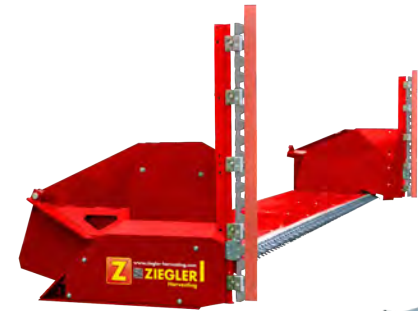


# Product portfolio (extract) of our fields of activity

## ZIEGLER HARVESTING PRODUCT OVERVIEW

World leader in canola harvesting technology and OEM supplier of leading agriculture brands.

- Rapeseed side knives and kits
- Corn harvesting
- Sunflower harvesting
- Pick-Up Systems





## ZIEGLER HARVESTING „RAPESEED / CANOLA HARVESTING“

As far as canola seed crops are concerned, Ziegler, as a world market leader, offers different solutions. Also many well-known manufacturers are supplied as OEM.

- Rapeseed side knives with mounting kits
- Rapeseed side knife kits (incl. drive)
- Hydraulic, electric or mechanic drive
- Rapeseed headers
- Pick-up-systems (swath harvesting)

Rapeseed side knives in action (video):

<https://www.youtube.com/watch?v=9k21iBkgvc0>



## ZIEGLER HARVESTING „CORNCHAMPION“

The Cornchampion corn pickers offer many advantages over competing products:

- Chopping units with free wheel gear box
- Light wight construction
- For all combine harvesters
- Fixed or foldable (option)
- Different working widths

Cornchampion in action (video):

[https://www.youtube.com/watch?v=UoePI\\_I9eEI](https://www.youtube.com/watch?v=UoePI_I9eEI)



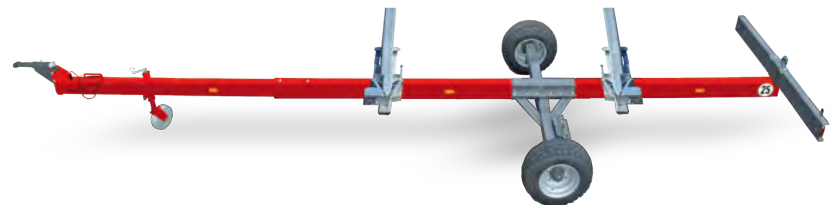
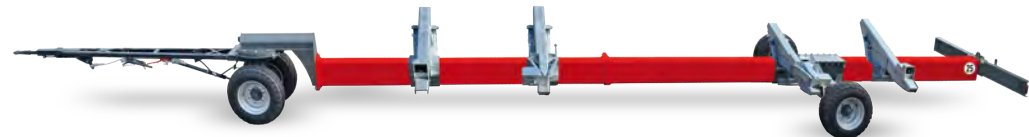
## ZIEGLER TRANSPORT „HEADER TRAILERS“

As the EU market leader, ZIEGLER offers the widest range of different versions of cutting unit wagons on the EU market.

- 1-axle trailers and 2-axle trailers
- 4WT 2-axle trailers (steered)
- 30 or 40 km/h version
- For almost all types of headers
- Painted in OEM color
- Since 2018 with new look

Trailers in action (video):

[https://www.youtube.com/watch?v=CR\\_HZ2i-Ba4](https://www.youtube.com/watch?v=CR_HZ2i-Ba4)



## ZIEGLER CULTIVATION PRODUCT RANGE

The newest products at the ZIEGLER range are soil cultivation solutions.

- Cultivators
- Disc harrows
- Light wight cultivators
- Different tine combinations
- Rollers and additional equipment
- Liquid manure technology, cultivators and barrels

Cultivators in action (video):

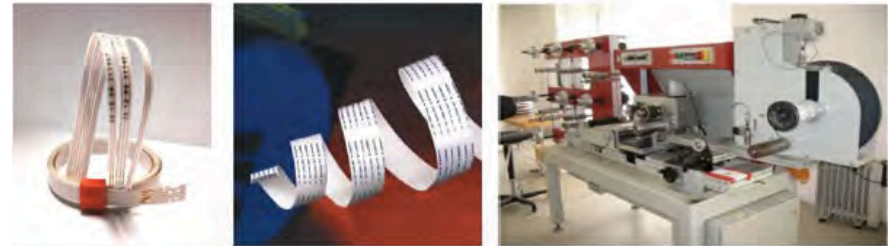
<https://www.youtube.com/watch?v=HPJc8ImQdes>



## ZIEGLER AUTOMOTIVE

Confection of cable and harnesses

- Cable and harness production
- Ribbon cable production
- Cable assembly (fully automatic)
- Complex wiring harnesses



## ZIEGLER AUTOMOTIVE

Security/ignition systems and sensors

- Security systems
- Opening devices
- Piezo ceramic sensors
- Zündanlassschalter
- Customers: Ceramtec, U-Shin, Bosch ...

ZIEGLER is a leader in the production of "Park distance control" sensors for Ceramtec/Bosch with 60 million units per year.



## ZIEGLER CLASSIC CARS

Mercedes classic spare parts

From 2018, Ziegler will offer a self-developed conversion kit for US models of the Mercedes R107 series. For the production of Euro-bumpers in original quality was invested in 24 different production tools worth the value of a family home. Further in-house developments and the development of a truss instead of for Mercedes classics are planned for the coming years.

Bush rods, headlight sets and cable trees in EU design and original quality.

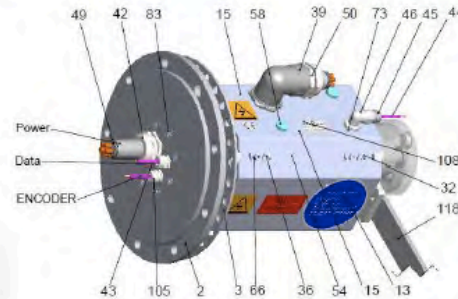


## ZIEGLER GMBH

Electronic components manufacturing

According to customer wishes and project specifications ZIEGLER manufactures on behalf.

- Electromechanical components for wind turbines (Moog), etc.
- rotating data/current transmitter
- ... and much more





## ZIEGLER GMBH

Manufacturing mechanical engineering

According to customer wishes and project specifications ZIEGLER manufactures on behalf. Furthermore, we also offer our customers material procurement for the respective project.

- Welded assemblies
- Bent parts
- Assembly inclusive wiring harness
- Paintwork
- Logistics



## MARTIN ZIEGLER GMBH & CO KG

Industrial estate „Gemünden am Main“

The ZIEGLER industrial estate at Gemünden (Main) is rented currently to 17 companies.

- Good infrastructure connection to the motorway A7 (only 30 km)
- Ideal geographic location between Würzburg and Frankfurt at B27.
- 60,000 m<sup>2</sup> complete
- 20,000 m<sup>2</sup> of hall area



## MARTIN ZIEGLER GMBH & CO KG Industrial estate „Gemünden am Main“

Nikolaus Sorg GmbH & Co. KG 7 · 8 · 8A · 10 · 10A · 11 · 13	Sanitätshaus Bader GmbH 16B	Greentrend GmbH 6
Michael Joa 4	Maler Lampert Meisterbetrieb 6	Roland Lippert 12B · 12C
Volker Nickel 15N	Formenbau Niemann GmbH 6C	Noble Brands GmbH 15N
RG GmbH 8 · 8A · 9	JR Montagebau 12A · 14	SD Industrie-, Wartungs- und Reinigungsservice UG 1A 3
Sehrazat Handel und Vermittlung 1A · 15S	SPS-Service Trafohaus	Welzenbach-Bau 16
Wolf Elektro 6A	Ziegler GmbH 6E	

### Lageplan / Location plan



# ZIEGLER references

## **ZIEGLER references** (small excerpt from all business fields)

### REFERENCES AUTOMOTIVE

U-Shin – security systems (BMW, Volvo, Audi, Jaguar, Mercedes Benz, VW)

Ceramtec GmbH – Parking distance sensores (Bosch)

Moog Industrial (Manitou, Ondal, Enercon, Liebherr, Rosenbauer, Palfinger, GEA)

### MECHANICAL ENGINEERING

Kverneland (welding assembly, frame construction and paint shop works)

Cargotec (welding assembly for different cranes, paint shop works)

Schaffelhuber (Spare parts for forage machinery)

Kuhn (welding assembly, frame construction and paint shop works for „Premina 9000“ series)

France Elevateur (welding assembly)

Kässbohrer (welding assembly for snow cats and beach cleaners)

Rosenbauer and Mathieu (welding assembly)

## Contact persons

### Sales management

Josef Ziegler jun.  
j.ziegler@ziegler-harvesting.com  
Tel.: +49 (0)8253-9997-0

### Managing director

Martin Ziegler  
m.ziegler@ziegler-gmbh.com  
Tel.: +49 (0)8253-9997-0

### Technical management

Martin Ziegler jun.  
m.ziegler2@ziegler-harvesting.com  
Tel.: +49 (0)8253-9997-0

### Mechanical engineering

Rudolf Mayer  
r.mayer@ziegler-harvesting.com  
Tel.: +49 (0)8253-9997-59

## **Thank you for your attention**

Ziegler GmbH  
Schrobenhausener Str. 56  
86554 Pöttmes  
Deutschland

Tel.: +49 (0) 82 53/99 97- 0  
Fax: +49 (0) 82 53/99 97-77  
Web: [www.ziegler-gmbh.com](http://www.ziegler-gmbh.com)